

# HXL4V

## Plug & Play System

Masport have been manufacturing vacuum/pressure pumps for over 100 years, so you can be sure of engineering excellence.

The Masport HXL4V has been specifically designed and engineered to meet the needs of hard working pumpers around the world.

To produce our precision pumps, we only use the finest quality components and materials to ensure the durability of your vacuum pump.

Every pump is factory tested before shipping and is backed up by a one year warranty against all manufacturing defects.

With Masport on board you have an efficient and reliable pump backed by the best service and support that has made Masport the #1 choice for pumpers worldwide.



- ▶ 165 CFM HXL4V Pump
- ▶ 20" Hg continuous duty operation
- ▶ Compact high efficiency Oil Separator and Scrubber
- ▶ Stainless steel Inlet Filter
- ▶ Vacuum/Pressure Relief Valve and Gauge
- ▶ Self-aligning gearbox and hydraulic drive options available
- ▶ Optional extended self-aligning gearbox available - allows direct alignment to the PTO on all truck models
- ▶ Rexnord Omega Coupler on gearbox installations ensure greater life for both automatic and manual transmission
- ▶ Pump Stand cutout to allow emergency brake line to pass through unobstructed
- ▶ Easily accessible maintenance points
- ▶ Oil, chemical and heat resistant hoses and float seat
- ▶ Available with plastic, steel or combo oil/flushing reservoir
- ▶ One year performance warranty

# 165 CFM

Free Air Displacement



# HXL4V

# Plug & Play System

## Performance Data – Vacuum

PUMP R.P.M	DISPLACEMENT C.F.M	S.C.F.M and A.C.F.M @ VACUUM											MAXIMUM VACUUM – “Hg	
		5	10	15	18	20	22	24	25	26	27	CONTINUOUS	INTERMITTENT	
1100	122	SCFM	103	78	57	41	33	23	15	12	7.2	3.7	20	27
		ACFM	121	117	114	103	99	86	75	72	53	37		
1225	137	SCFM	116	88	63	46	37	26	16	14	9.6	4.1	20	27
		ACFM	136	132	127	115	111	97	80	78	71	41		
1400	165	SCFM	132	100	72	53	42	30	19	16	11	4.7	20	27
		ACFM	155	150	145	132	126	112	95	84	81	47		

## Performance Data – Pressure

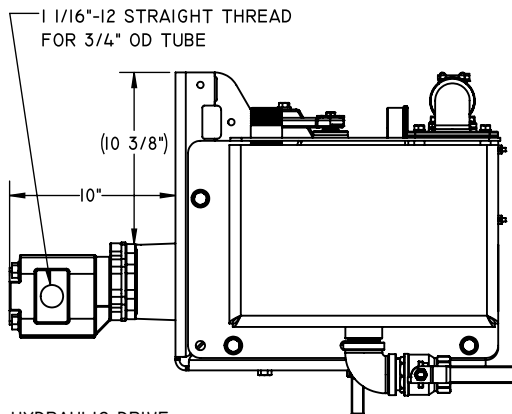
PUMP R.P.M	DISPLACEMENT C.F.M	S.C.F.M @ P.S.I.G							MAXIMUM PRESSURE – P.S.I.G	
		5	10	15	18	20	25	30	CONTINUOUS	INTERMITTENT
1100	122	102	97	93	87	82	77	72	20	30
1225	137	115	109	104	98	92	87	81	20	30
1400	165	131	125	119	112	105	99	92	20	30

## Horsepower Required @ “Hg

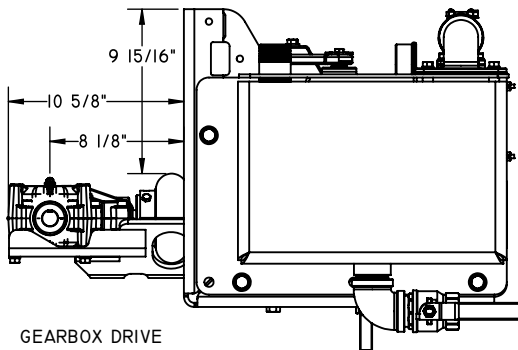
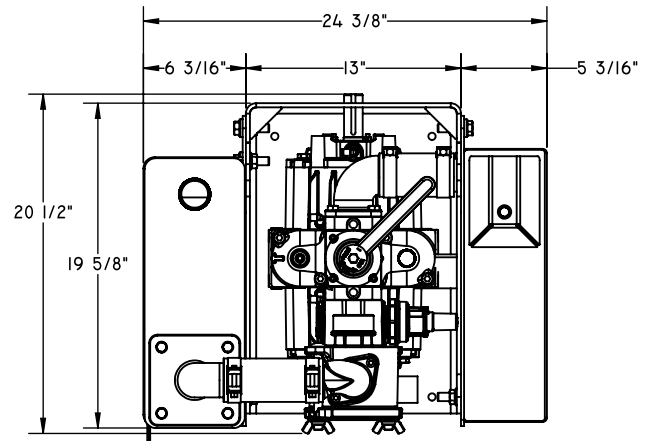
PUMP R.P.M	VACUUM “Hg				
	5	10	15	20	27
1100	4.4	4.7	4.9	5.4	5.9
1225	4.9	5.2	5.5	6.0	6.6
1400	5.6	5.9	6.3	6.9	7.5

## Horsepower Required @ P.S.I.G

PUMP R.P.M	P.S.I.G				
	5	10	15	20	25
1100	4.9	6.9	8.7	10.7	12.4
1225	5.5	7.7	9.7	11.9	13.8
1400	6.3	8.8	11.0	13.6	15.8



HYDRAULIC DRIVE



GEARBOX DRIVE

