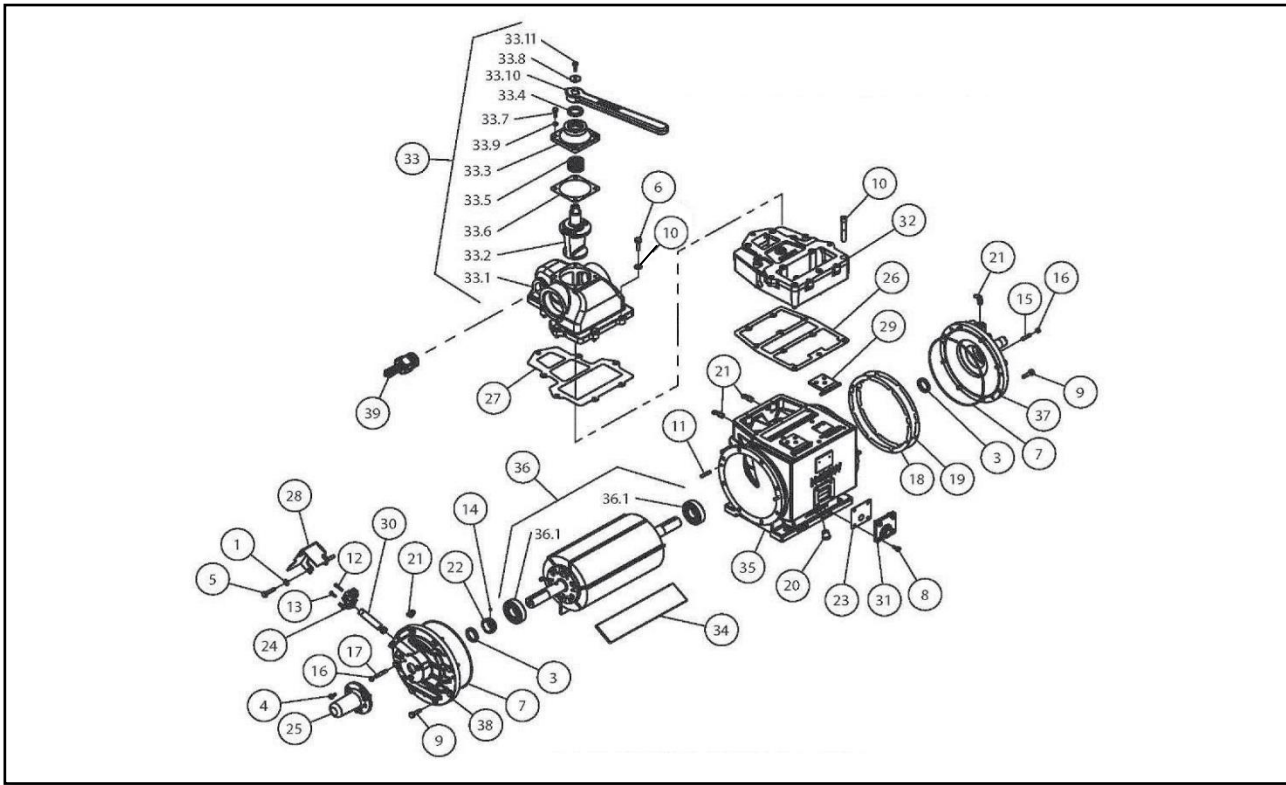


HXL400WV:



Item	Description	Part No.	Qty
1	Washer 3/8"	32508	2
2	Lockwasher M12	500203	7
3	Seal	501015	2
4	Screw M8 x 16	501571	3
5	Screw M10 x 40	501584	2
6	Screw M12 x 35	501666	7
7	O-Ring	501677	2
8	Screw M8 x 20	501848	4
9	Screw M10 x 35	501878	14
10	Screw M12 x 80	501965	10
11	Dowel Pin	503261	4
12	Screw M5 x 25	504261	1
13	Screw M5 x 16	504262	1
14	Screw M5 x 6	504264	1
15	Screw M8 x 35	504276	3
16	Nut M8	504278	6
17	Screw M8 x 50	504287	3
18	Shim Gasket 0.002"	542011	*
19	Shim Gasket 0.003"	542012	*
20	Plug 1/2"	147621	1
21	Elbow Swivel 1/4" **	568086	4
22	Gear Worm	568158	1
23	Side Plate Gasket	568232	1
24	Oil Pump	568437	1
25	Shaft Guard	568622	1
26	Manifold Gasket	568805	1

Item	Description	Part No.	Qty
27	Valve Gasket	568884	1
28	Oil Pump Guard	568903	1
29	Flap Assembly	968026	2
30	Drive Shaft Assembly	968045	1
31	Side Plate Gasket	968231	1
32	Manifold	968846	1
33	Valve Assembly	968887	1
33.1	Valve Body	968883	1
33.2	Valve Spool	968804	1
33.3	Valve Cap	968035	1
33.4	Seal	501015	1
33.5	Valve Spring	568038	1
33.6	Valve Cap Gasket	568044	1
33.7	Screw M8 x 25	501617	4
33.8	Indicator Washer	569724	1
33.9	Lockwasher M8	501610	4
33.10	Valve Handle	968037	1
33.11	Screw M10 x 25	501569	1
34	Vane Pack	968918	1
35	Cylinder	968959	1
36	Rotor Assembly	968967	1
36.1	Bearing	503098	2
37	End Cover	968971	1
38	End Cover Oil Pump	968976	1
39	Vacuum Relief Valve	569023	1
40	Oil Line (Not Shown)	600293	1

* Quantity may vary pump to pump

** Pre-Serial Number PF0426: Item 21 was 3 x 568086 - Elbow Swivel 1/4" & 1 x 568085 - Elbow Swivel 1/8"