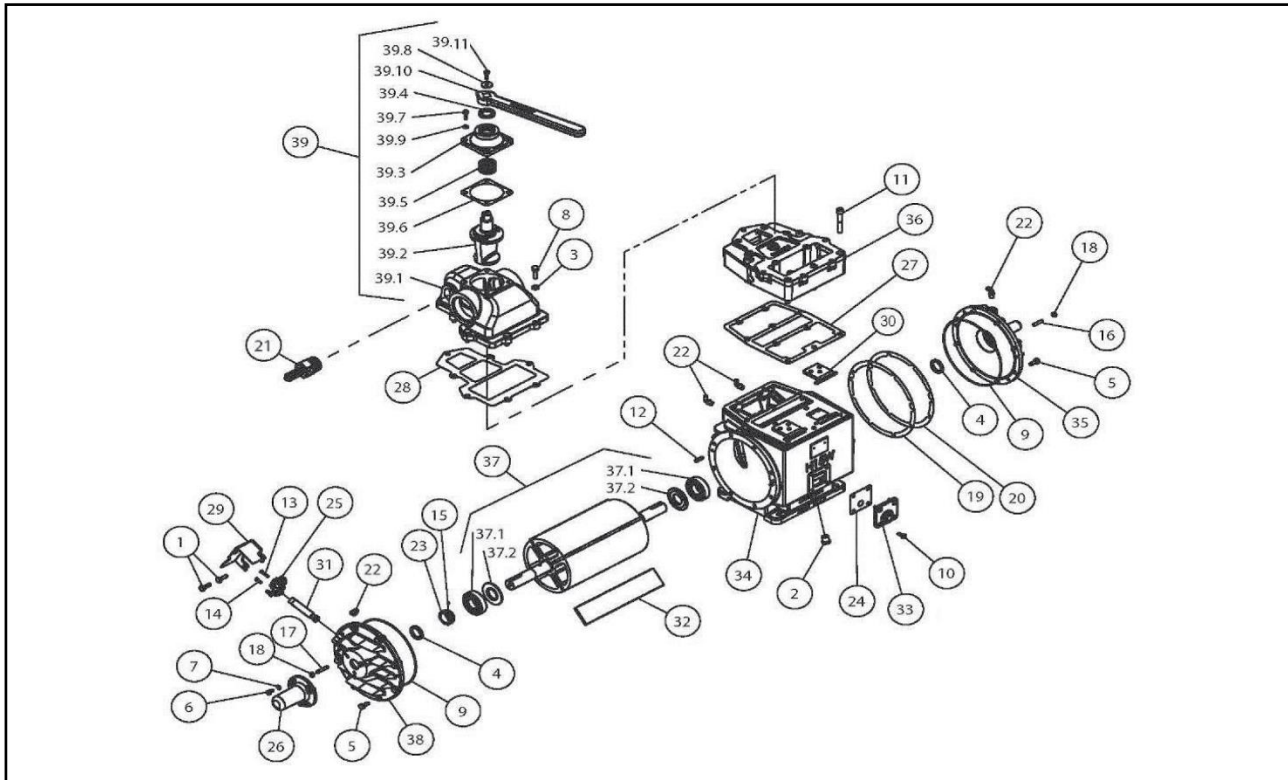


HXL15WV:



Item	Description	Part No.	Qty
1	Screw M10 x 30	32307	2
2	Plug 1/2"	147621	1
3	Lockwasher M12	500203	7
4	Seal	501015	2
5	Screw M10 x 25	501569	14
6	Screw M8 x 26	501571	3
7	Lockwasher M8	501610	3
8	Screw M12 x 35	501666	7
9	O-Ring	501677	2
10	Screw M8 x 20	501848	4
11	Screw M12 x 80	501965	10
12	Dowel Pin	503258	4
13	Screw M5 x 25	504261	1
14	Screw M5 x 16	504262	1
15	Grub Screw M5 x 6	504264	1
16	Grub Screw M8 x 35	504276	3
17	Grub Screw M5 x 16	504277	3
18	Nut M8	504278	6
19	Shim Gasket 0.002"	542011	*
20	Shim Gasket 0.003"	542012	*
21	Vacuum Relief Valve	569023	1
22	Elbow Swivel 1/4" **	568086	4
23	Gear Worm	568158	1
24	Side Plate Gasket	568232	1
25	Oil Pump	568437	1
26	Shaft Guard	568622	1
27	Manifold Gasket	568805	1

Item	Description	Part No.	Qty
28	Valve Gasket	568884	1
29	Oil Pump Guard	568903	1
30	Flap Assembly	968026	2
31	Drive Shaft Assembly	968045	1
32	Vane Pack	968218	1
33	Side Plate	968231	1
34	Cylinder	968801	1
35	End Cover	968843	1
36	Manifold	968846	1
37	Rotor Assembly	968848	1
37.1	Bearing	503098	2
37.2	Spacer	968611	2
38	End Cover Oil Pump	968854	1
39	Valve Assembly	968887	1
39.1	Valve Body	968883	1
39.2	Valve Spool	968804	1
39.3	Valve Cap	968035	1
39.4	Seal	501015	1
39.5	Valve Spring	568038	1
39.6	Valve Cap Gasket	568044	1
39.7	Screw M8 x 25	501617	4
39.8	Indicator Washer	569724	1
39.9	Lockwasher M8	501610	4
39.10	Valve Handle	968037	1
39.11	Screw M10 x 25	501569	1
40	Oil Line (Not Shown)	600293	1

* Quantity may vary pump to pump

** Pre-Serial Number PS0585: Item 22 was 3 x 568086 - Elbow Swivel 1/4" & 1 x 568085 - Elbow Swivel 1/8"